

Screeneo Innovation SA  
 Route de Lully 5C  
 1131 - Tolochenaz - Switzerland  
[www.philips.com/welcome](http://www.philips.com/welcome)  
[philips.projector.eu@screeneo.com](mailto:philips.projector.eu@screeneo.com)

Philips and the Philips Shield Emblem are registered trademarks of Koninklijke Philips N.V. used under license. Screeneo Innovation SA is the warrantor in relation to the product with which this booklet was packaged.

2019 © Screeneo Innovation SA  
 All right reserved

FCC ID: 2ASRT-NPX440  
 This device complies with part 15 of the FCC Rules. Operation is subject to the following two conditions: (1) This device may not cause harmful interference, and (2) this device must accept any interference received, including interference that may cause undesired operation.

**PHILIPS**

*NeoPix Easy*

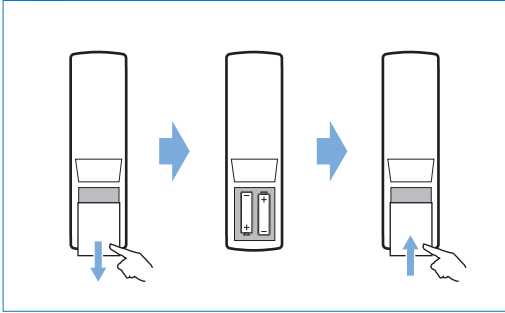
Mini projector



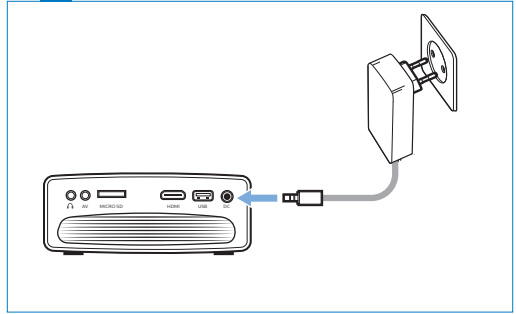
# Quick Start Guide

Register your product for further support and download the full user manual at: [www.philips.com/support](http://www.philips.com/support)

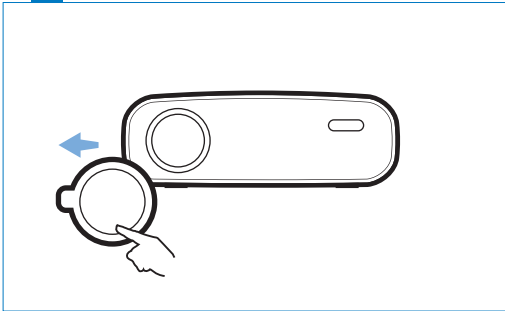
1 



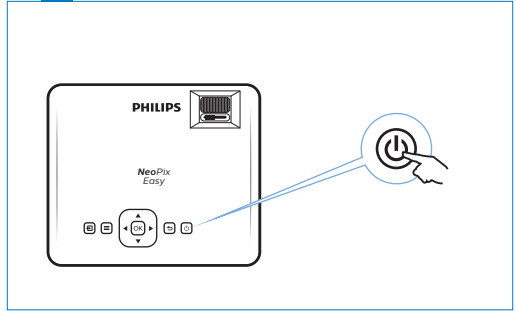
2  Power



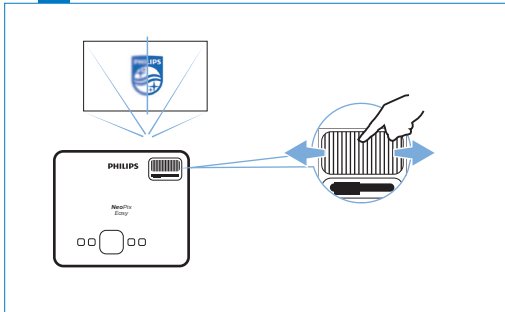
1  Remove lens cover



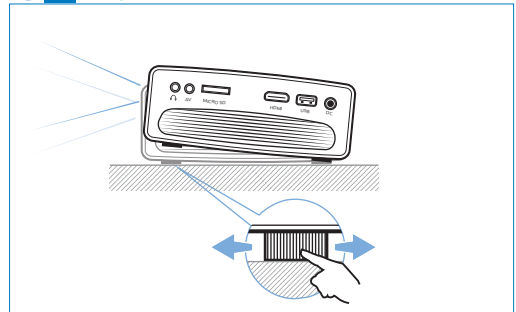
3  On



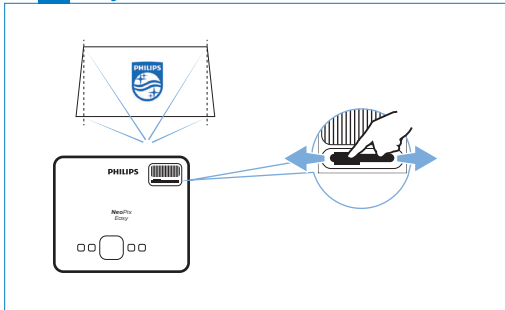
4  Focus



6  Adjustment knob



5  Keystone



7  Keys

